

Appendix 1

An introduction to the new Places in Lancashire and South Cumbria and the Lancashire Place journey to date

Jackie Moran

Integrated Place Leader (Lancashire East)



Purpose and Content



To provide an update on the new system arrangements, and specifically, the development of the new Lancashire Place



To provide an update on the emerging arrangements for our locality (East)



To consider some of the big questions / areas for development and a timeframe for next steps

An overview of the changes to date

The place integration deal

- Proposals to enable places to deliver integrated care for residents

ICB Recovery

- 'Turning challenges into opportunities' – The state of our system report
- Financial recovery plans

Health and Care Act (2022)

- Legislative framework to support collaboration and partnership working
- Outlined expectations for ICBs to delegate to place-based partnerships

Health and social care integration white paper

- Proposals that aim to provide better, more joined-up health and care services at 'place' level

People at the heart of care white paper

- A 10-year vision for adult social care and support

Thriving Places

- Guidance on the development of place-based partnerships as part of statutory integrated care systems

Development and delivery in our five places

The Hewitt review

- An independent review of integrated care systems

Place development

- Recommendations from national expert in health and care integration
- Strategic narrative refresh

Directors of Health and Care Integration

- Place directors commence in post

Review of place boundaries

- Change to four places to increase alignment with local authority boundaries and enable deeper integration

ICB Established

- New organisation formed

Our five places

- Five places with varying levels of maturity
- Common strategic narrative, aligned with national publication on Thriving Places



An overview of the changes to date

The place integration deal

- Proposals to enable places to deliver integrated care for residents

ICB Recovery

- 'Turning challenges into opportunities' – The state of our system report
- Financial recovery plans

Health and Care Act (2022)

- Legislative framework to support collaboration and partnership working
- Outlined expectations for ICBs to delegate to place-based partnerships

Health and social care integration white paper

- Proposals that aim to provide better, more joined-up health and care services at 'place' level

People at the heart of care white paper

- A 10-year vision for adult social care and support

Thriving Places

- Guidance on the development of place-based partnerships as part of statutory integrated care systems

Development and delivery in our five places

The Hewitt review

- An independent review of integrated care systems

Place development

- Recommendations from national expert in health and care integration
- Strategic narrative refresh

Directors of Health and Care Integration

- Place directors commence in post

Review of place boundaries

- Change to four places to increase alignment with local authority boundaries and enable deeper integration

ICB Established

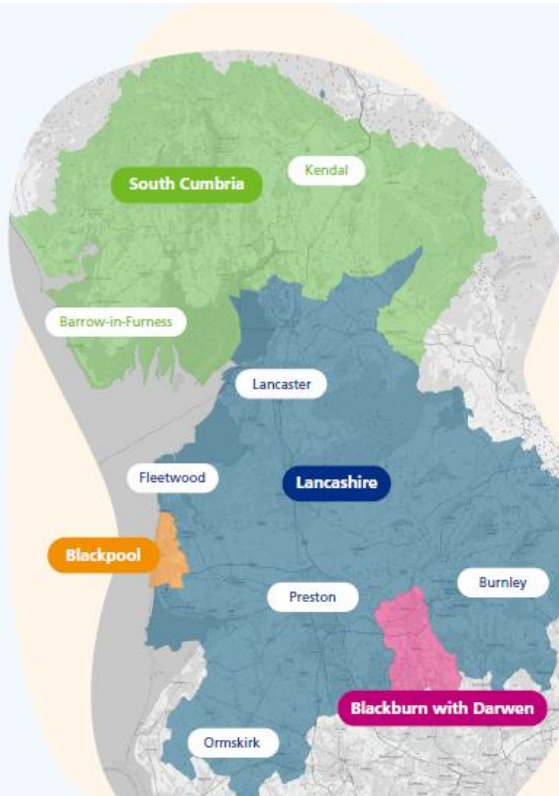
- New organisation formed

Our five places

- Five places with varying levels of maturity
- Common strategic narrative, aligned with national publication on Thriving Places



From five to four ...in Lancashire and South Cumbria



Blackburn with Darwen

Coterminous with a unitary council that is responsible for all local government functions within its boundary

Blackpool

Coterminous with a unitary council that is responsible for all local government functions within its boundary

South Cumbria

Not coterminous with any one council, this place covers:

- The unitary council of Westmorland and Furness, without the Eden District.
- Some parts of the Borough of Copeland which sit within the unitary Cumberland Council.
- Some parts of the District of Craven which sit within the unitary North Yorkshire Council.

Lancashire

Coterminous with the county council, but also 12 district councils across the three localities of North, Central and East

Number of people living in each place

Blackburn with Darwen	154,800
Blackpool	141,100
South Cumbria	186,478
Lancashire	1,235,300

Total population - approximately 1.7 million

The role of our places...



What does this mean for our residents in Lancashire ?

“We want to enable our residents to live better lives in Lancashire, by joining up services, so they can;”

- ‘I can receive intensive short term care or longer term support based in the community which enables me to maintain my independence, or in some cases to remain safe’
- Services - for example - Same day emergency care, crisis care, step up and step down care

Receive care and support

(Community based short term and crisis intervention)

Be healthy and get advice

(health creation and prevention, self help and care navigation)

- ‘I can access help and advice and signposting when I need it’
- Services – for example - self care and self help services, social prescribers, advice and guidance, health checks, wider community assets such as housing and leisure services

- ‘I can get more help or support in the community which helps me to remain at home’
- Services – for example - Social Care services, community and primary care services, acute services in the community, intermediate care

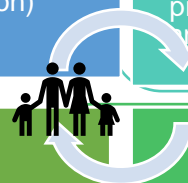
Seek more help

(Ongoing support to remain at home)

Seek help

(Anticipatory neighbourhood based care)

- ‘I can get the right care, from a trained professional, in the right place, when I need it’
- Services – for example - Primary Care (including general practice, dental, pharmacy, opticians), Urgent Care, District Nurses, Early Help Services, Sexual Health Services, NHS 111, health visitors – working together in integrated neighbourhood teams



Lancashire place is sub-divided into 3 Localities

Central Lancashire

c598k population (11 PCNs) – Preston (3 PCNs), Chorley (3 PCNs), South Ribble (2 PCNs) and West (3 PCNs).

Integrated Place Lead – Sarah James

East Lancashire

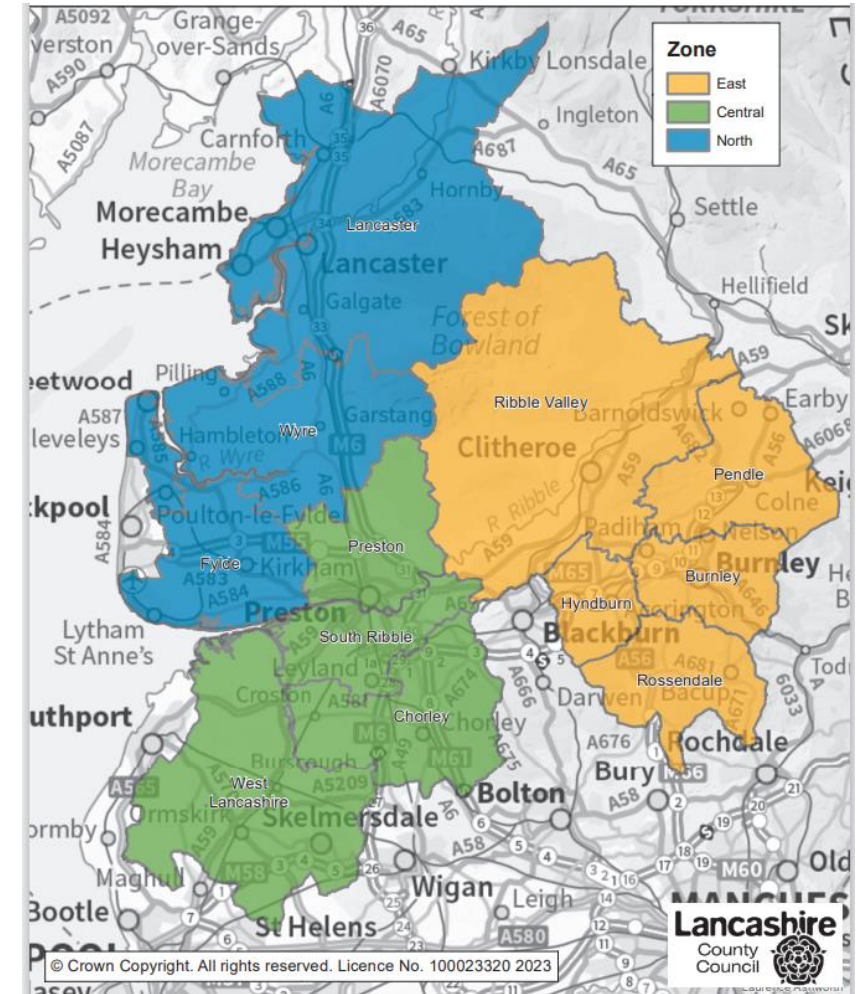
c392k population (9 PCNs)– Burnley (2 PCNs), Hyndburn (2 PCNs), Pendle (2 PCNs), Rosendale (2 PCNs) and Ribble Valley (1 PCN).

Integrated Place Lead – Jackie Moran

North Lancashire

c337k population (8 Primary Care Networks (PCNs))– Fylde and Wyre (5 PCNs) and Lancaster City (3 PCNs).

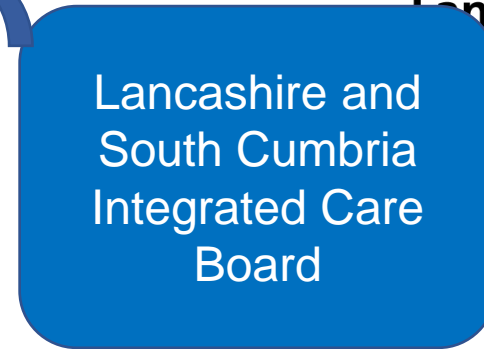
Integrated Place Lead – Heather Crozier



From the wider System to local Delivery



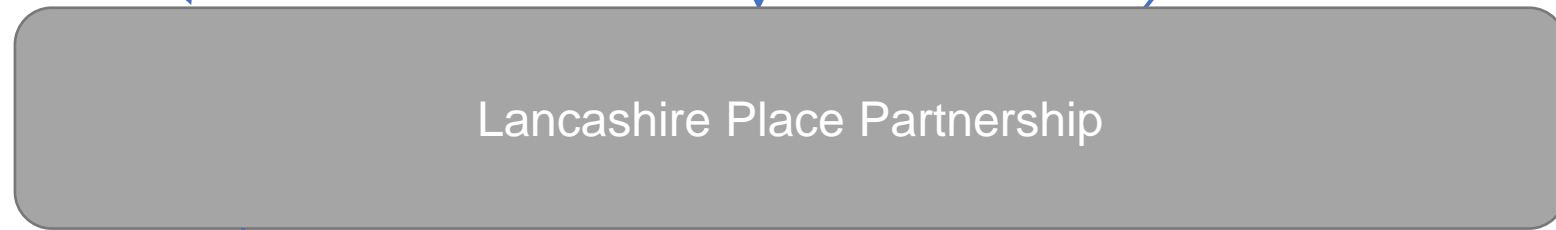
LSC ICP will be jointly convened and through the Integrated Care Strategy will set a number of strategic priorities to be delivered in Places or through other Partnerships



Lancashire and South Cumbria Integrated Care Board



Lancashire PP will agree the priorities for our Place, including those common across the system as set by the ICP, and those local to Lancashire with clearly defined expected outcomes and timeframes



Three Integrated localities will translate the strategic priorities into operational delivery, utilising its specific resources and capacity



Chorley, Preston, South Ribble, West Lancashire

Burnley, Hyndburn, Pendle, Rossendale, Ribble Valley

Lancaster, Fylde and Wyre

Purpose and Content



To provide an update on the new system arrangements, and specifically, the development of the new Lancashire Place



To provide an update on the emerging arrangements for our locality (East)



To consider some of the big questions / areas for development and a timeframe for next steps

How will we work at locality level to achieve this?

Our localities will;

- **Translate strategic agreement into operational delivery** to improve lives and well-being of the whole population; places are all age.
- **Influence the wider Place** by providing feedback to the Lancashire Place Partnership via a forum(s) to discuss wider Place issues and how they impact at a locality level
- **Enable and support networks of communities** to flourish – supporting an asset and strengths based approach to support.
- Ensure that **Lancashire wide priorities are included in local plans based on need.**
- Enable **local priorities to be developed, delivered** and recognised to address health and well-being inequity.
- **Undertake performance management** to assess impact and support targeting of work.
- Where appropriate **provide an interface to the ‘health integration’ agenda**; recognising that health partners will need to work on ‘health footprints’ for patient safety reasons.

They will all have;



Communities and neighbourhoods at the front and centre of what is happening – centred around the people who live and work there.



An all age multiagency partnership (engine room) to oversee the development and implementation of the local plan to include Lancashire Wide objectives linked to priorities and local priorities based on specific local needs



A **space for ‘health integration’** between health providers to ensure seamless pathways for residents



Core delivery team to support the above **drawn from all partners**



Delivery of health and social care integration at local level

Lancashire Place Partnership



East Lancashire Locality Executive Oversight Group



East Lancashire
Health
Transformation

Burnley
Together
Health and
Well-Being
Partnership

Pendle
Health &
Well-being
Partnership

Rossendale
Health
Inequalities
Partnership

Hyndburn
Population
Health
Board

**Ribble Valley
Health and
Well-being
Partnership**



Engagement
and
involvement



Primary /
Secondary /
Community Care
Clinical and Care
Interface Group

Burnley East

Pendle East

Rossendale
East

Hyndburn
Central

Ribblesdale

Burnley West

Pendle West

Rossendale
West

Hyndburn
Rural



District Level Health and Wellbeing Partnerships



Lancashire and
South Cumbria
Integrated Care Board

Burnley

Integrated Neighbourhood Teams
Hard to reach Groups
Physical activity linking to Outdoor town

Pendle

Integrated Neighbourhood Teams
Children Families and Early years

Rossendale

Integrated Neighbourhood Teams
Physical Activity
Mental Health

Hyndburn

Integrated Neighbourhood Teams
Children Best Start in Life
LTC through behaviour choices –
smoking, alcohol, physical activity

Ribble Valley

Integrated Neighbourhood Teams
Older Age
Isolation
Physical Activity
Community Connection

What's next for Place Development?

Three Big Questions...

- 1) What will be planned and delivered in Place – what responsibilities will Places have in the new system?
- 2) What resources and delegations will Place receive to enable them to deliver on these responsibilities?
- 3) How will this clarity enable places to link up the functions of the ICB at a local level?

(From Population Health to Primary Care to Urgent and Emergency Care, Adult Health and Care etc)

The answer to all of these questions is being considered as part of the Place Integration Deal...

The 'place integration deal'

The 'place integration deal' sets out the way in which places will operate as part of the Lancashire and South Cumbria integrated care system, specifically in relation to the NHS Lancashire and South Cumbria Integrated Care Board (ICB).

It describes:

1. National and local expectations and ambitions relating to the role of places in delivering the core aims of ICSs and supporting the financial recovery of the ICB
2. Our principle of subsidiarity and associated tests that support primacy of place
3. Our expectations on what will be planned and delivered in places
4. A model for agreeing the resources that places will receive from the ICB to deliver on these expectations
5. A model for ways of working that will enable places to be successful and the ICB to feel confident in its delegations

This is the first stage of the place integration deal.

In line with our strategic narrative for places and the Directors of Health and Care Integration holding shared roles across the NHS and local government, we anticipate that the following stage will be to consider this from the perspective of local government, enabling deeper integration.

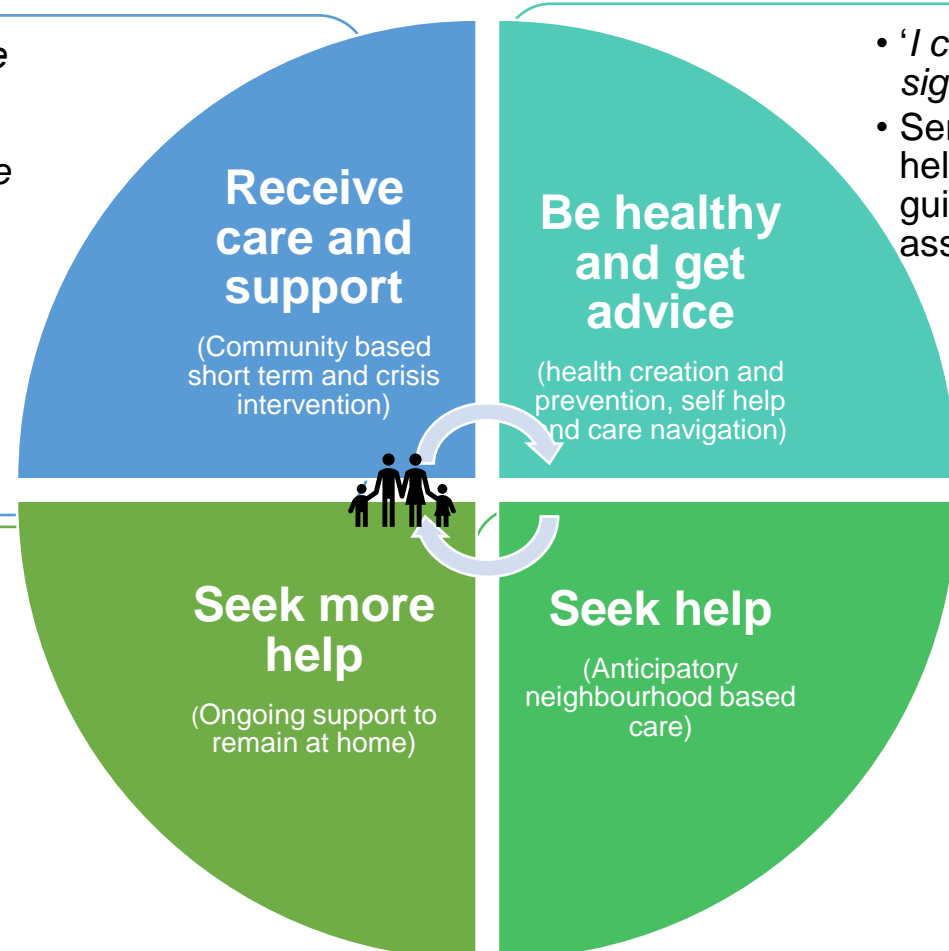


For the Lancashire deal, we want to consider what delegations could help us deliver this model...

“We want to enable our residents to live better lives in Lancashire, by joining up services, so they can;”

- *‘I can receive intensive short term care or longer term support based in the community which enables me to maintain my independence, or in some cases to remain safe’*
- *Services - for example - Same day emergency care, crisis care, step up and step down care*

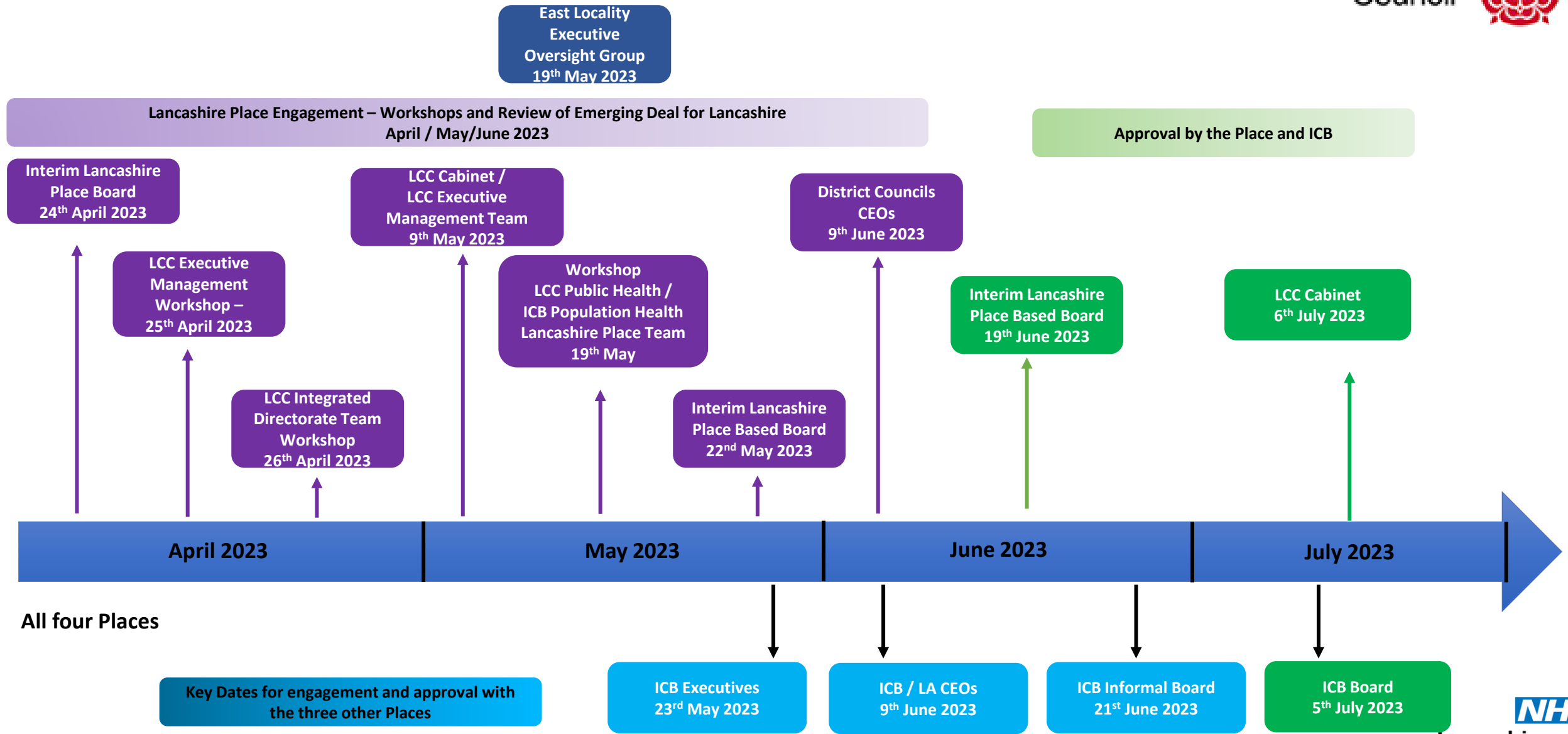
- *‘I can get more help or support in the community which helps me to remain at home’*
- *Services – for example - Social Care services, community and primary care services, acute services in the community, intermediate care*



- *‘I can access help and advice and signposting when I need it’*
- *Services – for example - self care and self help services, social prescribers, advice and guidance, health checks, wider community assets such as housing and leisure services*

- *‘I can get the right care, from a trained professional, in the right place, when I need it’*
- *Services – for example - Primary Care (including general practice, dental, pharmacy, opticians), Urgent Care, District Nurses, Early Help Services, Sexual Health Services, NHS 111, health visitors – working together in integrated neighbourhood teams*

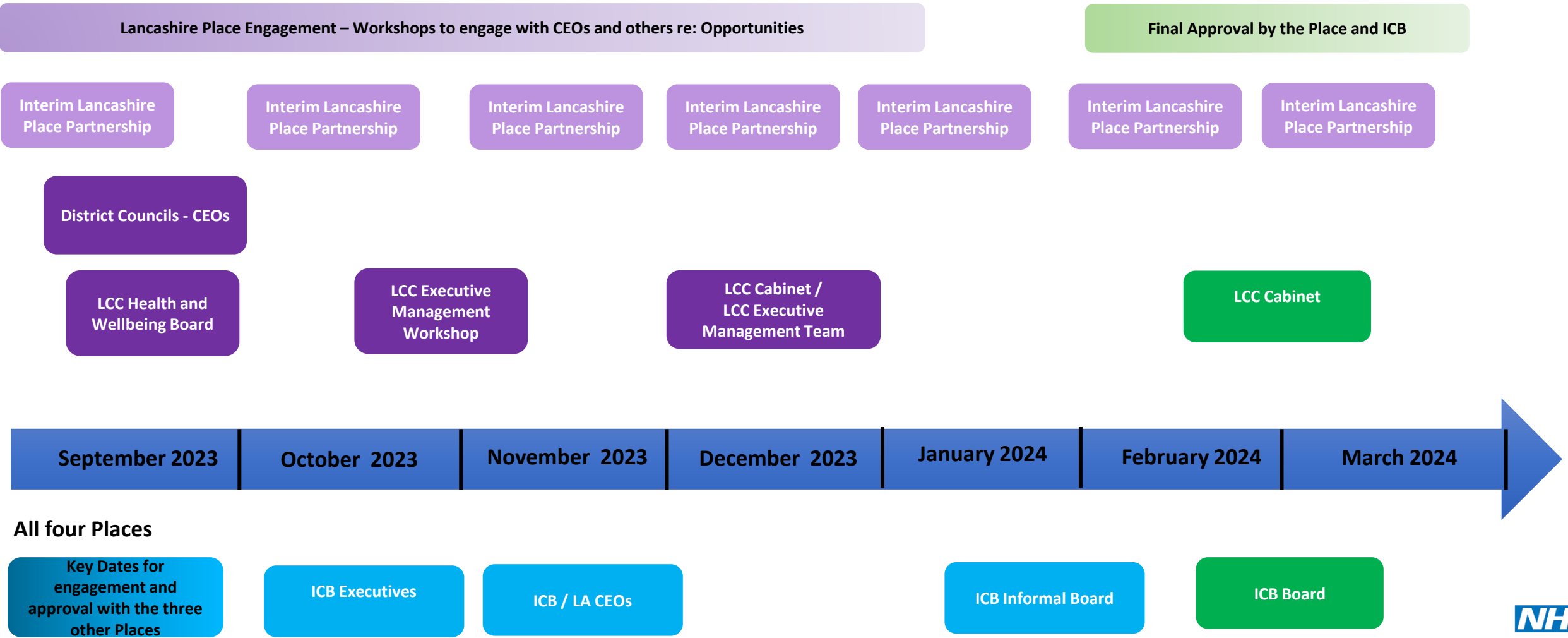
Timeframe for Lancashire Place delegation - engagement and approval



Governance to support Integration



INDICATIVE Timeframe for Lancashire Place delegation - engagement and approval



In Conclusion



To provide an update on the new system arrangements, and specifically, the development of the new Lancashire Place



To provide an update on the emerging arrangements for our locality (East)



To consider some of the big questions / areas for development and a timeframe for next steps

It is the start of a new journey for Lancashire and we would welcome many more opportunities for discussion and collaboration